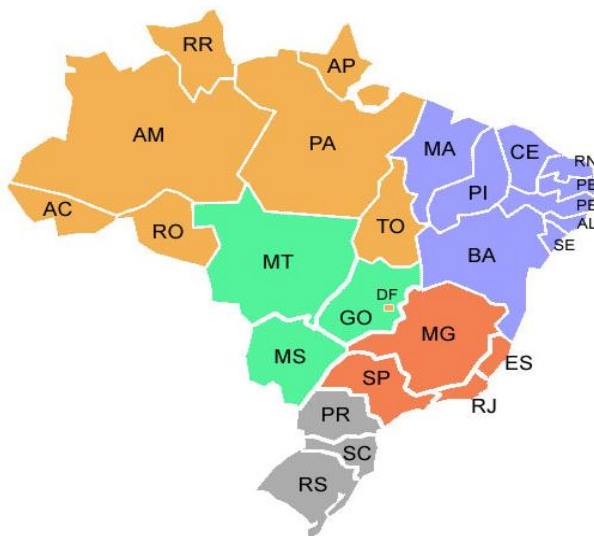


2009 - Orçamento Executado

RR	
AP	
AM	38.709.000
PA	53.480.000
TO	
AC	7.504.000
RO	
	99.693.000

MT	20.514.000
GO	6.280.000
DF	69.441.000
MS	6.029.000
	102.264.000

PR	37.982.000
SC	44.216.000
RS	11.989.000
	94.187.000



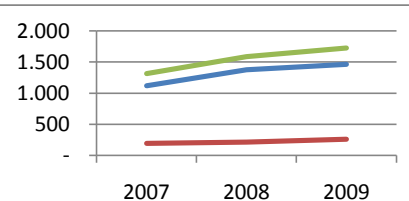
MA	15.436.000
PI	4.137.000
CE	44.327.000
RN	6.399.000
PB	3.699.000
PE	41.789.000
AL	11.842.000
SE	4.952.000
BA	42.122.000
	174.703.000

MG	232.000.000
ES	5.369.000
SP	726.657.000
RJ	290.300.000
	1.254.326.000

Brasil 1.725.173.000

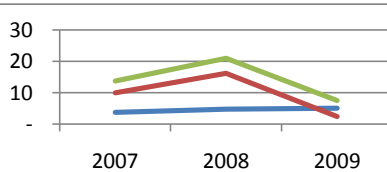
ORÇAMENTO ANUAL EXECUTADO - TODAS AS FAPs

	Tesouro do Estado	Outras fontes	Total
2007	1.120.821.668	194.893.524	1.315.715.192
2008	1.376.129.897	212.044.811	1.588.174.708
2009	1.463.449.957	261.724.204	1.725.174.161
	3.960.401.522	668.662.539	4.629.064.061



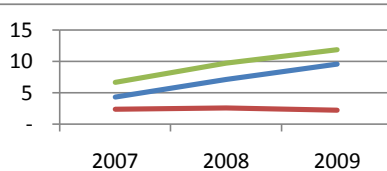
FUNTAC - Acre

	Tesouro do Estado	Outras fontes	Total
2007	3.735.047	10.008.049	13.743.096
2008	4.760.588	16.195.987	20.956.575
2009	5.085.465	2.418.483	7.503.948
	13.581.100	28.622.520	42.203.619

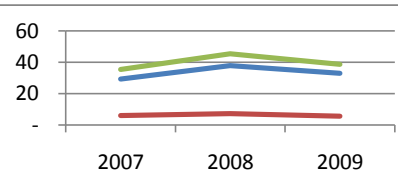


FAPEAL - Alagoas

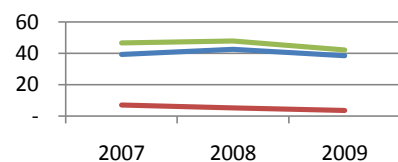
	Tesouro do Estado	Outras fontes	Total
2007	4.314.945	2.380.171	6.695.116
2008	7.140.512	2.592.846	9.733.358
2009	9.598.908	2.243.565	11.842.473
	21.054.365	7.216.582	28.270.947



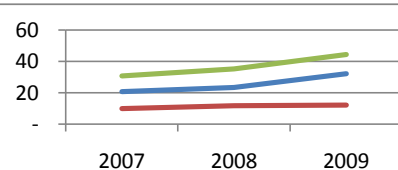
FAPEAM - Amazonas			
	Tesouro do Estado	Outras fontes	Total
2007	29.424.943	6.112.171	35.537.115
2008	37.964.997	7.370.580	45.335.576
2009	33.047.863	5.661.620	38.709.483
	100.437.803	19.144.371	119.582.174



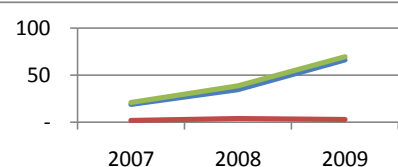
FAPESB - Bahia			
	Tesouro do Estado	Outras fontes	Total
2007	39.413.099	7.199.960	46.613.059
2008	42.579.069	5.243.962	47.823.031
2009	38.462.626	3.659.468	42.122.094
	120.454.794	16.103.390	136.558.184



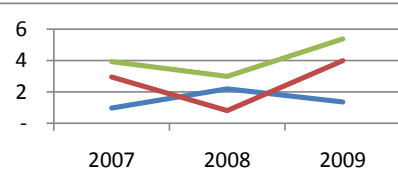
FUNCAP - Ceará			
	Tesouro do Estado	Outras fontes	Total
2007	20.811.087	10.048.083	30.859.170
2008	23.487.847	11.707.423	35.195.270
2009	32.163.955	12.162.813	44.326.768
	76.462.889	33.918.319	110.381.208



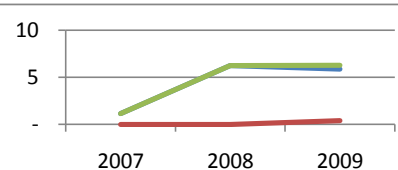
FAPDF - Distrito Federal			
	Tesouro do Estado	Outras fontes	Total
2007	19.085.855	2.111.694	21.197.549
2008	34.756.876	3.922.843	38.679.719
2009	66.359.537	3.081.711	69.441.248
	120.202.269	9.116.247	129.318.516



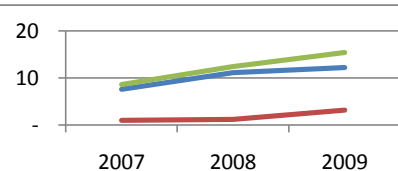
FAPES - Espírito Santo			
	Tesouro do Estado	Outras fontes	Total
2007	979.822	2.947.294	3.927.116
2008	2.193.059	807.465	3.000.524
2009	1.369.326	3.999.998	5.369.325
	4.542.207	7.754.757	12.296.965



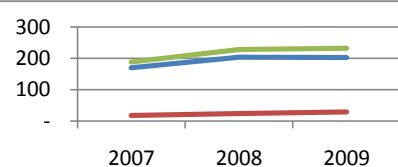
FAPEG - Goiás			
	Tesouro do Estado	Outras fontes	Total
2007	1.140.396	-	1.140.396
2008	6.248.563	-	6.248.563
2009	5.880.465	399.710	6.280.175
	13.269.424	399.710	13.669.133



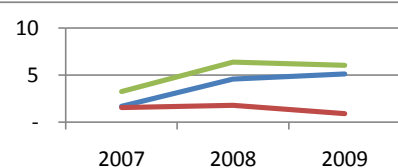
FAPEMA - Maranhão			
	Tesouro do Estado	Outras fontes	Total
2007	7.627.854	1.019.825	8.647.679
2008	11.168.142	1.234.848	12.402.990
2009	12.235.597	3.200.000	15.435.597
	31.031.593	5.454.673	36.486.266



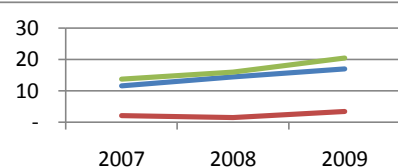
FAPEMIG - Minas Gerais			
	Tesouro do Estado	Outras fontes	Total
2007	170.000.000	18.000.000	188.000.000
2008	204.000.000	24.000.000	228.000.000
2009	203.000.000	29.000.000	232.000.000
	577.000.000	71.000.000	648.000.000



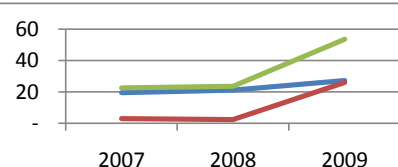
FUNDECT - Mato Grosso do Sul			
	Tesouro do Estado	Outras fontes	Total
2007	1.688.911	1.557.025	3.245.936
2008	4.591.055	1.790.297	6.381.351
2009	5.128.372	901.059	6.029.431
	11.408.338	4.248.381	15.656.719



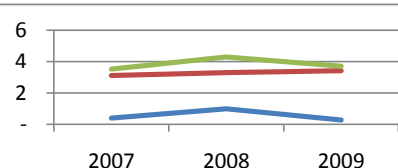
FAPEMAT - Mato Grosso			
	Tesouro do Estado	Outras fontes	Total
2007	11.631.800	2.109.658	13.741.458
2008	14.444.971	1.561.093	16.006.064
2009	17.013.618	3.500.000	20.513.618
	43.090.389	7.170.751	50.261.140



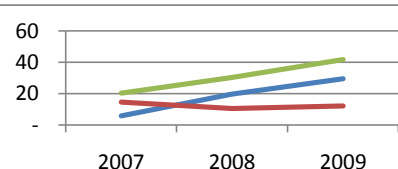
FAPESPA - Pará			
	Tesouro do Estado	Outras fontes	Total
2007	19.526.990	3.114.230	22.641.220
2008	21.190.070	2.505.000	23.695.070
2009	27.341.037	26.138.798	53.479.835
	68.058.097	31.758.028	99.816.125



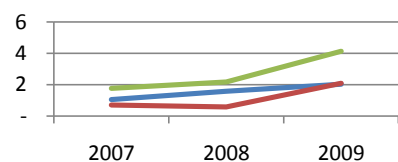
FAPESQ - Paraíba			
	Tesouro do Estado	Outras fontes	Total
2007	409.064	3.112.334	3.521.398
2008	1.005.753	3.302.130	4.307.883
2009	278.802	3.419.808	3.698.610
	1.693.619	9.834.272	11.527.891



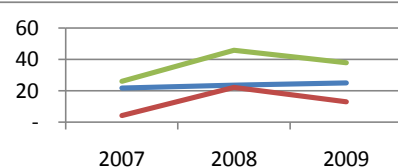
FACEPE - Pernambuco			
	Tesouro do Estado	Outras fontes	Total
2007	5.830.710	14.572.611	20.403.321
2008	19.686.179	10.629.859	30.316.038
2009	29.621.460	12.167.466	41.788.927
	55.138.350	37.369.936	92.508.286



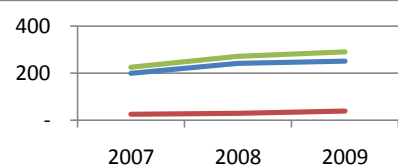
FAPEPI - Piauí			
	Tesouro do Estado	Outras fontes	Total
2007	1.056.675	709.734	1.766.409
2008	1.591.479	580.292	2.171.770
2009	2.036.265	2.100.766	4.137.031
	4.684.419	3.390.792	8.075.211



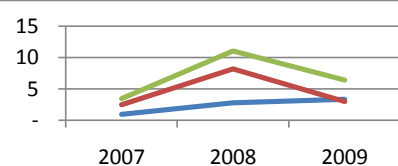
Fundação Araucária - Paraná			
	Tesouro do Estado	Outras fontes	Total
2007	21.817.433	4.296.244	26.113.677
2008	23.552.730	22.295.023	45.847.753
2009	25.023.630	12.958.680	37.982.310
	70.393.793	39.549.947	109.943.740



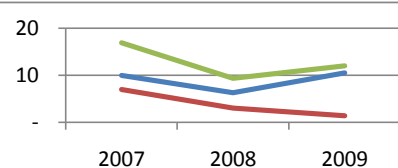
FAPERJ - Rio de Janeiro			
	Tesouro do Estado	Outras fontes	Total
2007	200.248.569	25.483.526	225.732.095
2008	241.306.407	29.906.993	271.213.400
2009	251.635.122	38.664.849	290.299.971
	693.190.098	94.055.368	787.245.466



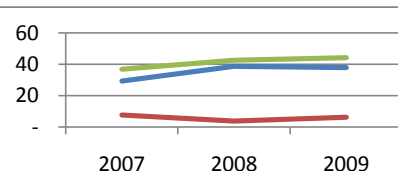
FAPERN - Rio Grande do Norte			
	Tesouro do Estado	Outras fontes	Total
2007	965.000	2.488.000	3.453.000
2008	2.824.000	8.219.000	11.043.000
2009	3.384.000	3.015.000	6.399.000
	7.173.000	13.722.000	20.895.000



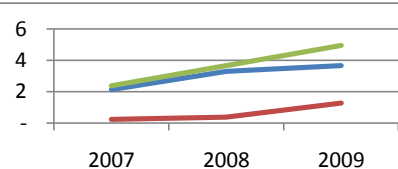
FAPERGS - Rio Grande do Sul			
	Tesouro do Estado	Outras fontes	Total
2007	9.950.031	6.973.521	16.923.552
2008	6.319.966	3.039.937	9.359.903
2009	10.548.425	1.440.707	11.989.132
	26.818.422	11.454.165	38.272.587



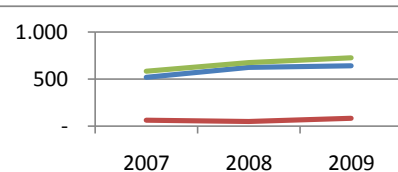
FAPESC - Santa Catarina			
	Tesouro do Estado	Outras fontes	Total
2007	29.265.776	7.683.121	36.948.897
2008	38.651.330	3.835.234	42.486.564
2009	37.969.176	6.247.159	44.216.336
	105.886.282	17.765.514	123.651.797



FAPITEC - Sergipe			
	Tesouro do Estado	Outras fontes	Total
2007	2.139.945	237.961	2.377.905
2008	3.298.364	376.764	3.675.129
2009	3.662.424	1.289.498	4.951.921
	9.100.733	1.904.223	11.004.955



FAPESP - São Paulo			
	Tesouro do Estado	Outras fontes	Total
2007	519.757.716	62.728.312	582.486.028
2008	623.367.940	50.927.237	674.295.177
2009	642.603.884	84.053.045	726.656.928
	1.785.729.540	197.708.593	1.983.438.133



Orçamento 2011 previsto

CAPES R\$ 3.093.000.000,00

<http://www.capes.gov.br/servicos/sala-de-imprensa/36-noticias/4011-ministro-preve-orcamento-para-2011-superior-a-r-3-bilhoes>

<http://www.anpei.org.br/imprensa/noticias/orcamento-do-mct-em-2011-pode-atingir-r-7299-bilhoes/>

FINEP/FNDCT R\$ 2.821.000.000,00

<http://www.protec.org.br/noticias.asp?cod=562>

<http://www.jornaldaciencia.org.br/Detalhe.jsp?id=73190>

FAPs (Projeção) R\$ 1.943.000.000,00

(aumento de 7,8% para 2010 e 4,5% para 2011, conforme PIB previsto)

CNPq R\$ 1.184.000.000,00

<http://www.anpei.org.br/imprensa/noticias/orcamento-do-mct-em-2011-pode-atingir-r-7299-bilhoes/>

<http://www.jornaldaciencia.org.br/Detalhe.jsp?id=73190>